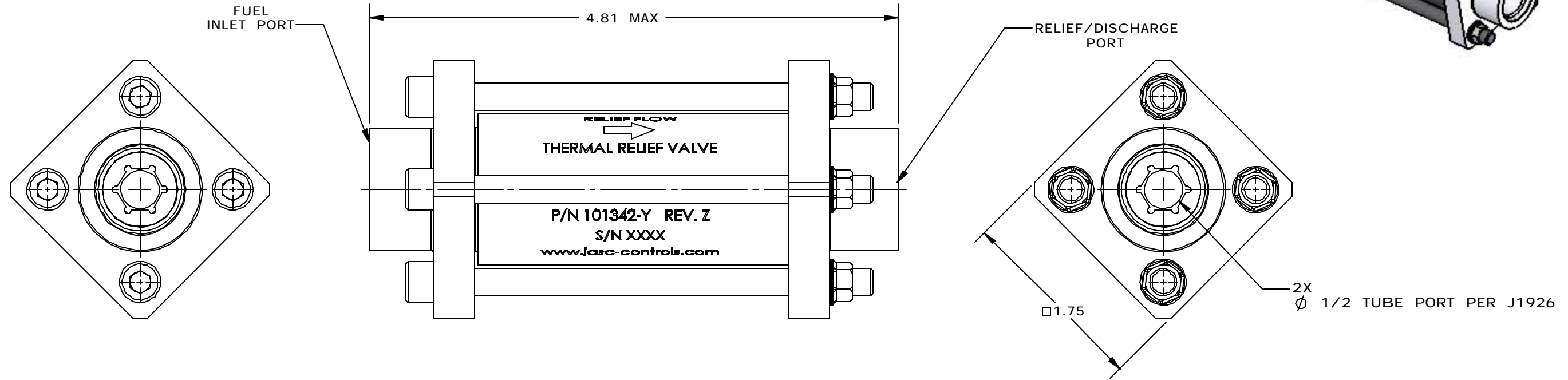
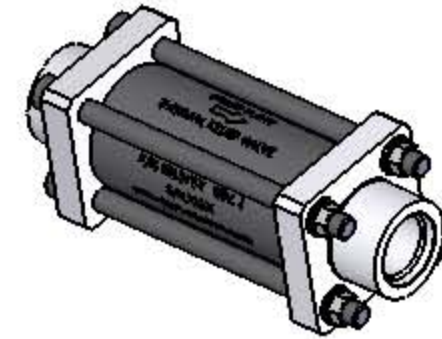


THIS PRINT IS THE PROPERTY OF JASC AND REPRESENTS A PROPRIETARY ARTICLE TO WHICH JASC RETAINS THE EXCLUSIVE RIGHT OF USE AND/OR SALE. THIS PRINT IS DISCLOSED IN CONFIDENCE AND POSSESSION OF IT DOES NOT CONVEY PERMISSION TO MANUFACTURE THE ARTICLE OR ARTICLES SHOWN HEREIN. SUCH PERMISSION BEING GRANTED ONLY BY SPECIFIC AUTHORIZATION IN WRITING SIGNED BY AN OFFICER OF JASC.

REVISIONS			
REV.	DATE	DESCRIPTION	BY
NC	9/15/06	Initial Release	NVD



- 6. FILTRATION: 200 MICRON NOMINAL, 300 MICRON ABSOLUTE (IN BOTH DIRECTIONS)
- 5. FLOW DURING ACTUATION: 0.1 GALLONS
- 4. MAX SUSTAINED FLOW RATE CAPABILITY: 0.25 GPM @ 150 PSIG DURING THERMAL RELIEF MODE
- 3. THERMAL RELIEF PRESSURE: 150 ±10 PSIG (10.2 ±.7 BARG)
- 2. MAX AMBIENT TEMP: 170° F (77° C)
- 1. INLET PRESSURE: 1200 PSIG (500 NORMAL OPERATING)

NOTES: UNLESS OTHERWISE SPECIFIED

JASC Tempe, Arizona			
TITLE: VALVE, THERMAL RELIEF			
CONTRACT NO.	APPROVALS	DATE	SIZE
	DRAWN DKS	12/1/04	B
	CHECKED HBJ	1/12/05	CAGE
			ΦR293
			DWG. NO.
			101342- OUTLINE
			SCALE: 1:1
			WEIGHT: 2.002lbs
			SHT 1 OF 1

DIMS. APPLY AFTER PLATING
BREAK SHARP EDGES .005 .015
MACHINED SURFACES
.005- .020R MACHINED FILLETS

UNLESS OTHERWISE SPECIFIED
DIMENSIONS ARE IN INCHES
SYMBOLS PER ANSI Y14.5
TOLERANCES ARE:
FRACTIONS DECIMALS ANGLES
± 1/64 .X ±.1 ±1°
.XX ±.010
.XXX ±.005
.XXXX ±.0010

APPROVALS	DATE
DRAWN DKS	12/1/04
CHECKED HBJ	1/12/05

FINAL	-
NEXT ASSY	USED ON
APPLICATION	

NC
101342- OUTLINE