

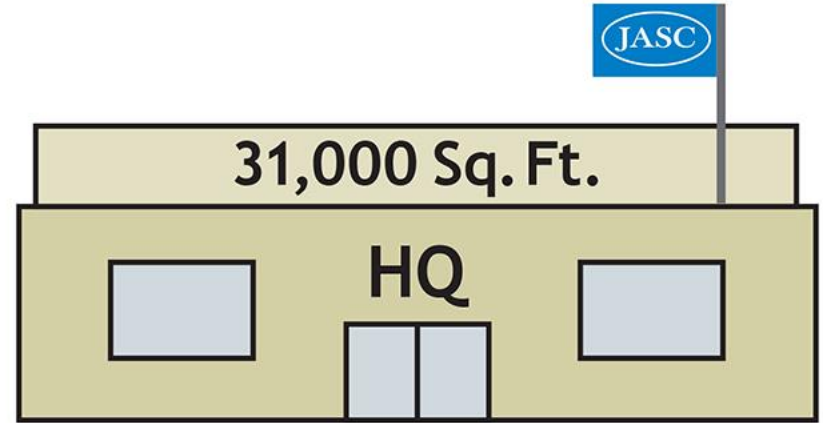
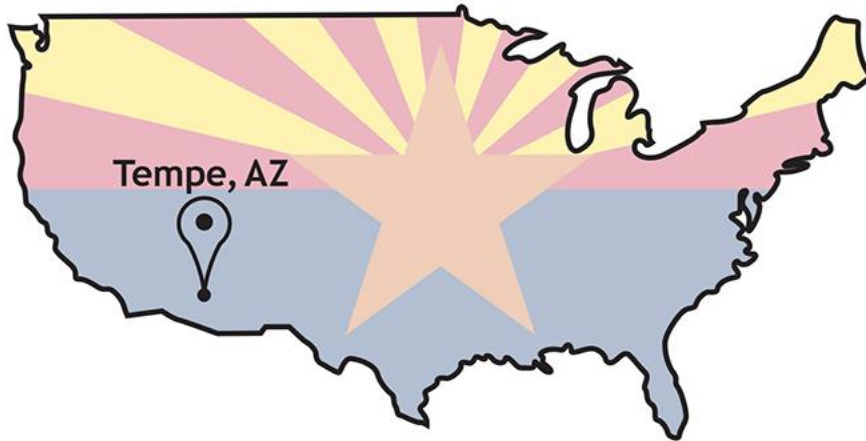
A collage of aerospace-related images. On the left, a white Airbus A380-800 is shown in flight against a clear blue sky. On the right, a military transport aircraft, possibly a C-17 Globemaster III, is depicted on a tarmac with green laser-like lines indicating its sensor or targeting systems.

Aerospace

A collage of space-related images. On the left, a detailed cutaway view of a space shuttle or orbiter is shown, revealing internal components and structures. On the right, a large rocket is captured during its ascent, with a massive plume of white smoke and fire at its base, set against a blue sky with a crane visible in the background.

Space

JASC at a Glance



72
Employees

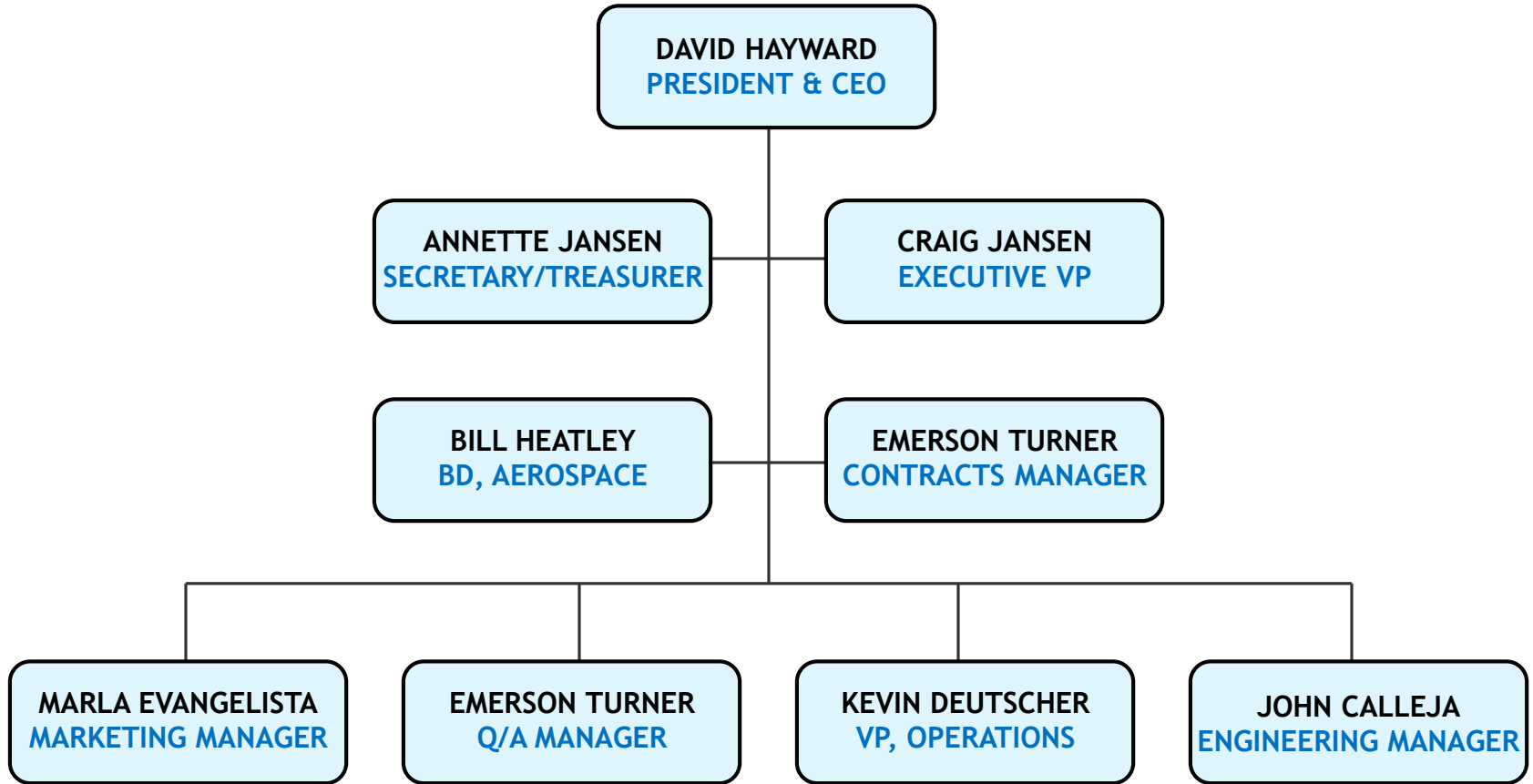


Aerospace

Proprietary to JASC—Competition Sensitive



Organization



Core Competencies

Fluid Control Design

Pneumatic, Hydraulic, Electro-Mechanical Devices

Comprehensive Analysis

System-Coupled Dynamic Modeling & Simulation

CFD (Full N-S) · MatLab/SimuLink · Electro-Magnetics Solver

3D Solid Modeling · FEA (Non-Linear Structural/Thermal)

High-Precision Machining

Critically-Toleranced Matched Assemblies

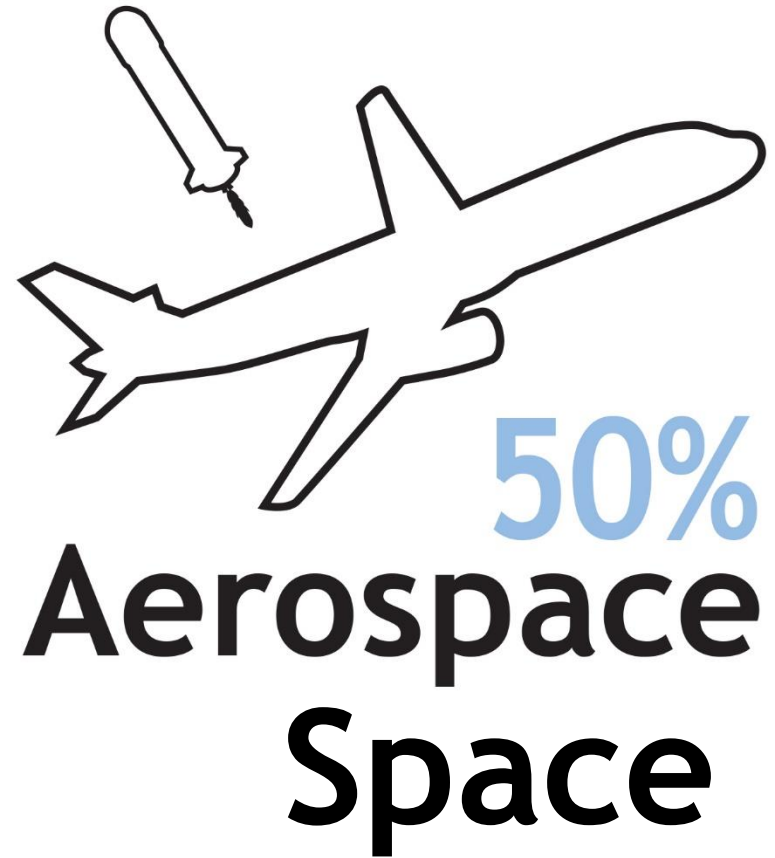
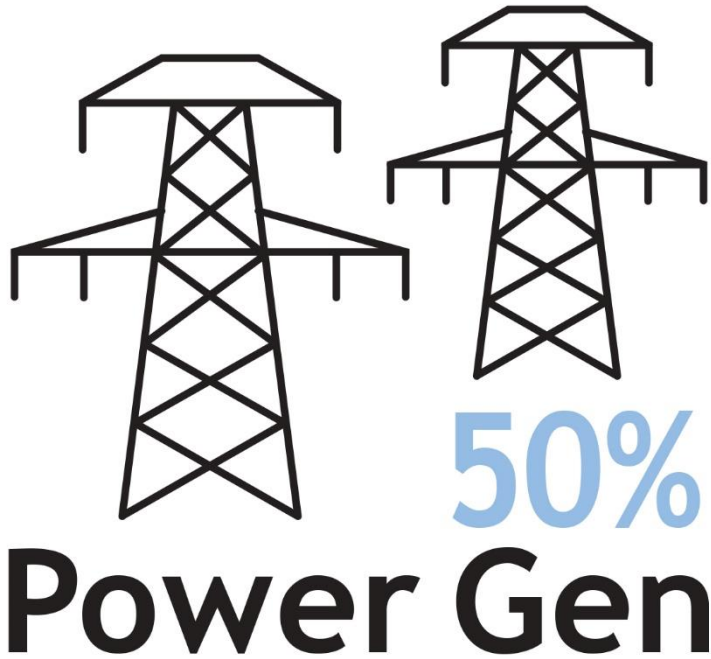
Test Capability

High Pressures (up to 15,000 psi)

Temperatures from Cryogenic to 2400 °F

Shock and Vibration Lab

Current Markets



Customers



Aerospace

Proprietary to JASC—Competition Sensitive



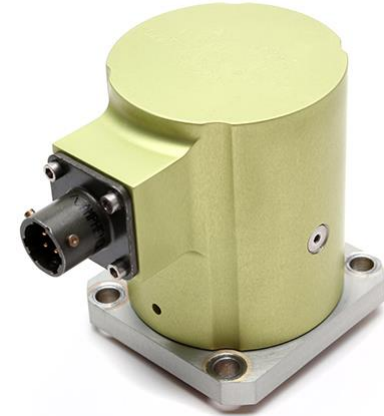
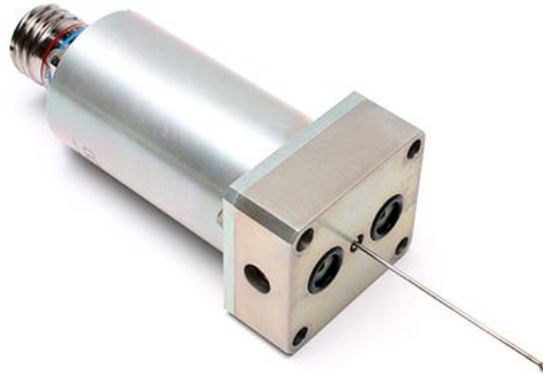
Aerospace

Aerospace

Proprietary to JASC—Competition Sensitive



Aerospace



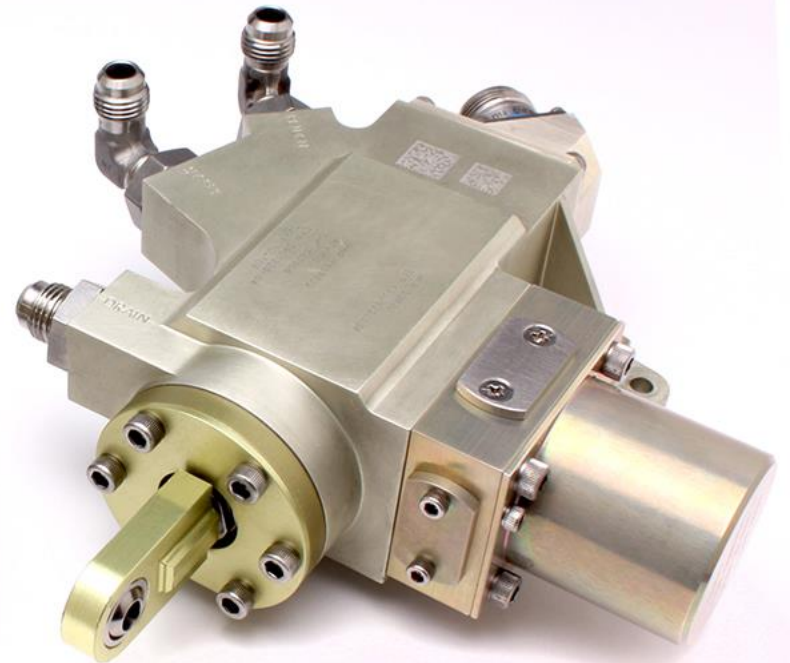
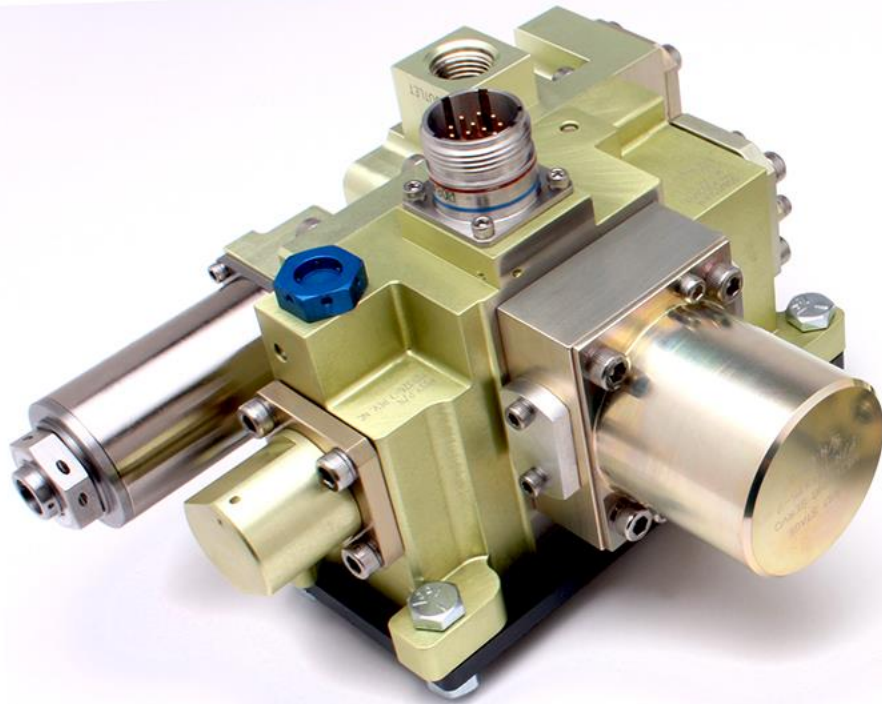
Clevis, Flapper and FlexJet™ Servo-Valves
Hydraulic, Pneumatic, High-Temperature
Single-Stage, Two-Stage, 2/3/4-Way

Aerospace

Proprietary to JASC—Competition Sensitive



Aerospace



Integrated Fuel Metering Units
Inlet Guide Vane Actuators

Aerospace

Proprietary to JASC—Competition Sensitive



Aerospace



Flow Dividers, Pressure Regulators, Solenoids, Relief Valves

Aerospace

Proprietary to JASC—Competition Sensitive



Aerospace



Engine Thrust Reverser Control Actuators

Aerospace

Proprietary to JASC—Competition Sensitive



A white space capsule is shown in orbit above the Earth's blue and white atmosphere. The capsule is cylindrical with a conical nose and a circular hatch on the side. The word "Space" is written in large, bold, black letters across the center of the capsule.

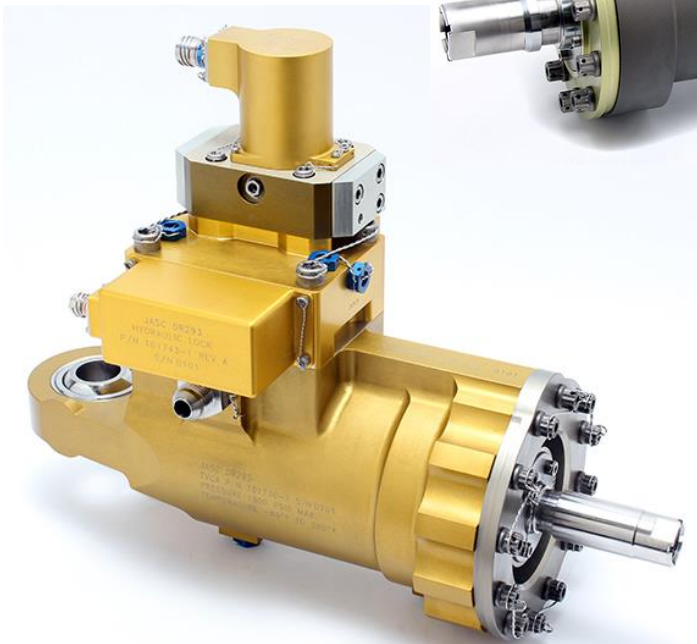
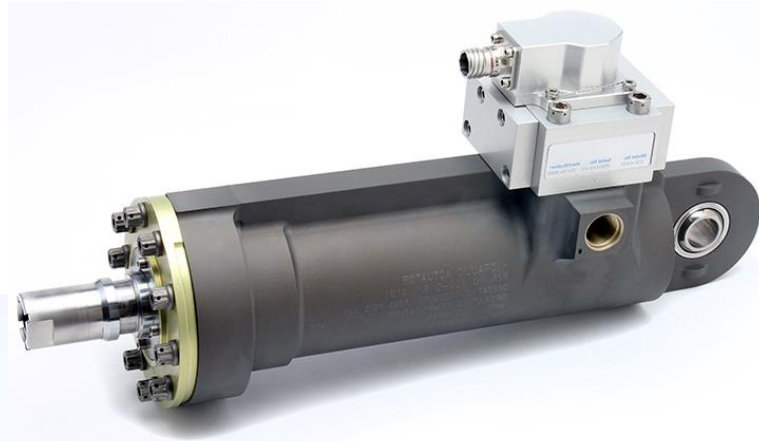
Space

Aerospace

Proprietary to JASC—Competition Sensitive



Space



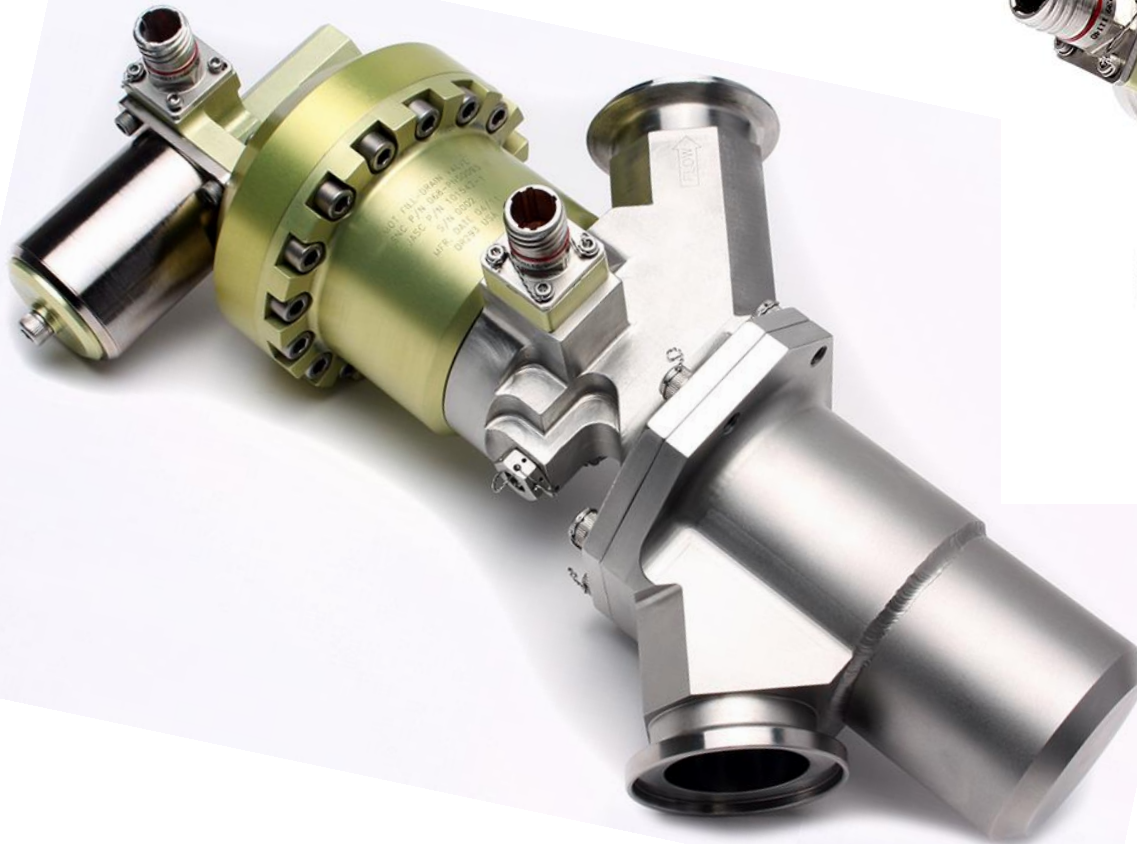
Thrust Vector Control Servo-Actuators
Flight Control System Servo-Actuators

Aerospace

Proprietary to JASC—Competition Sensitive



Space



Internally and Externally Pilot-Operated Valves

Aerospace

Proprietary to JASC—Competition Sensitive



Space



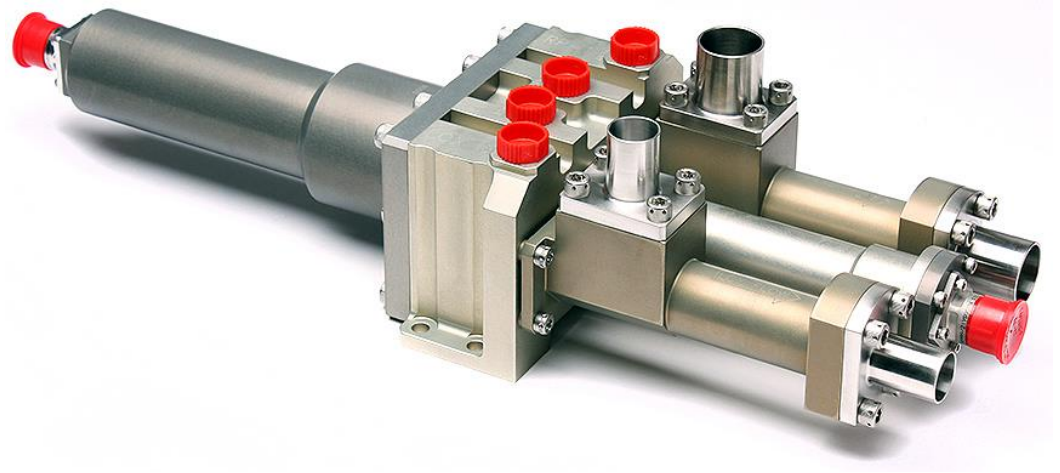
High-Flow, High-Pressure Isolation Valves

Aerospace

Proprietary to JASC—Competition Sensitive



Space



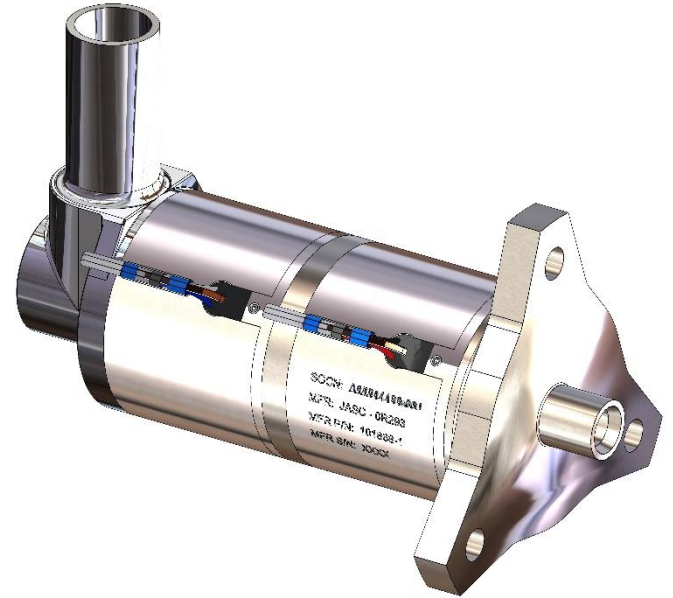
Cryogenic Bi-Propellant Turbo-Pump Throttle Control Valves
Proportional and Discrete Propellant Metering Valves

Aerospace

Proprietary to JASC—Competition Sensitive



Space



Nested Check Valves Series Hypergolic Propellant Valves

Aerospace

Proprietary to JASC—Competition Sensitive





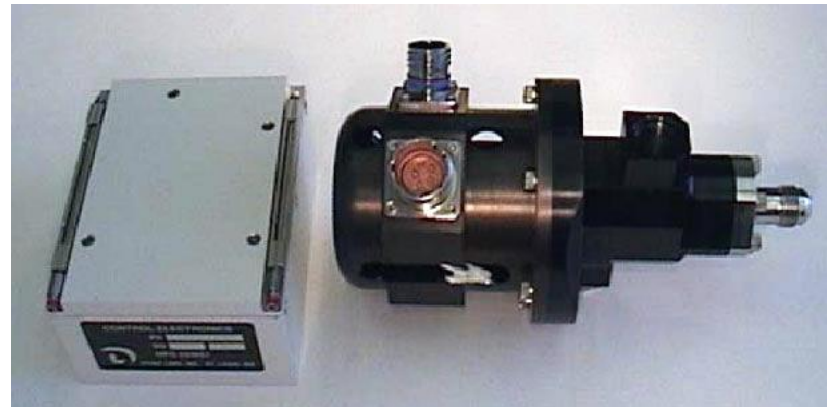
Hypersonics Military Combustion Control

Aerospace

Proprietary to JASC—Competition Sensitive



Hypersonics



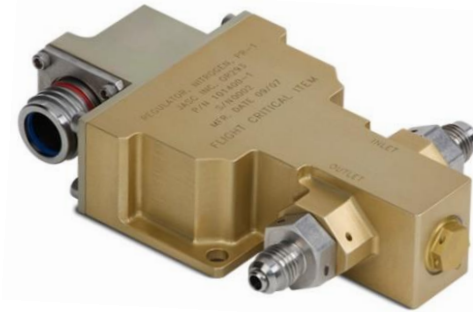
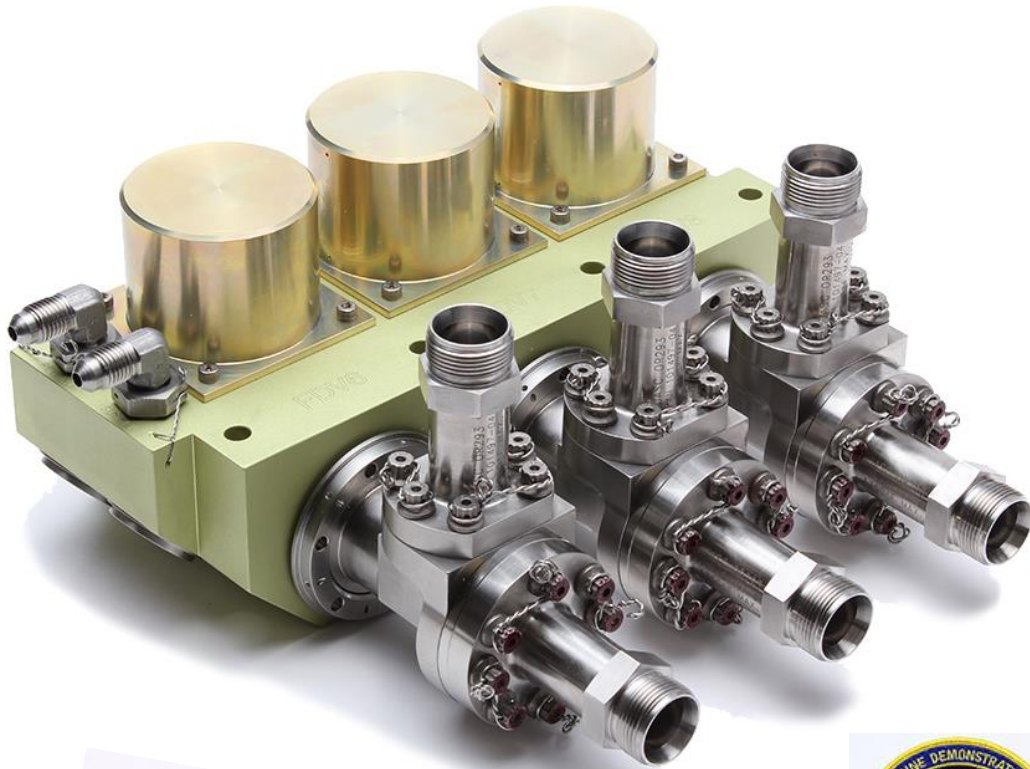
Liquid & Gaseous Propellant Control Valves & Electronics
Electronic Propellant Pressure Regulating Systems

Aerospace

Proprietary to JASC—Competition Sensitive



Hypersonics



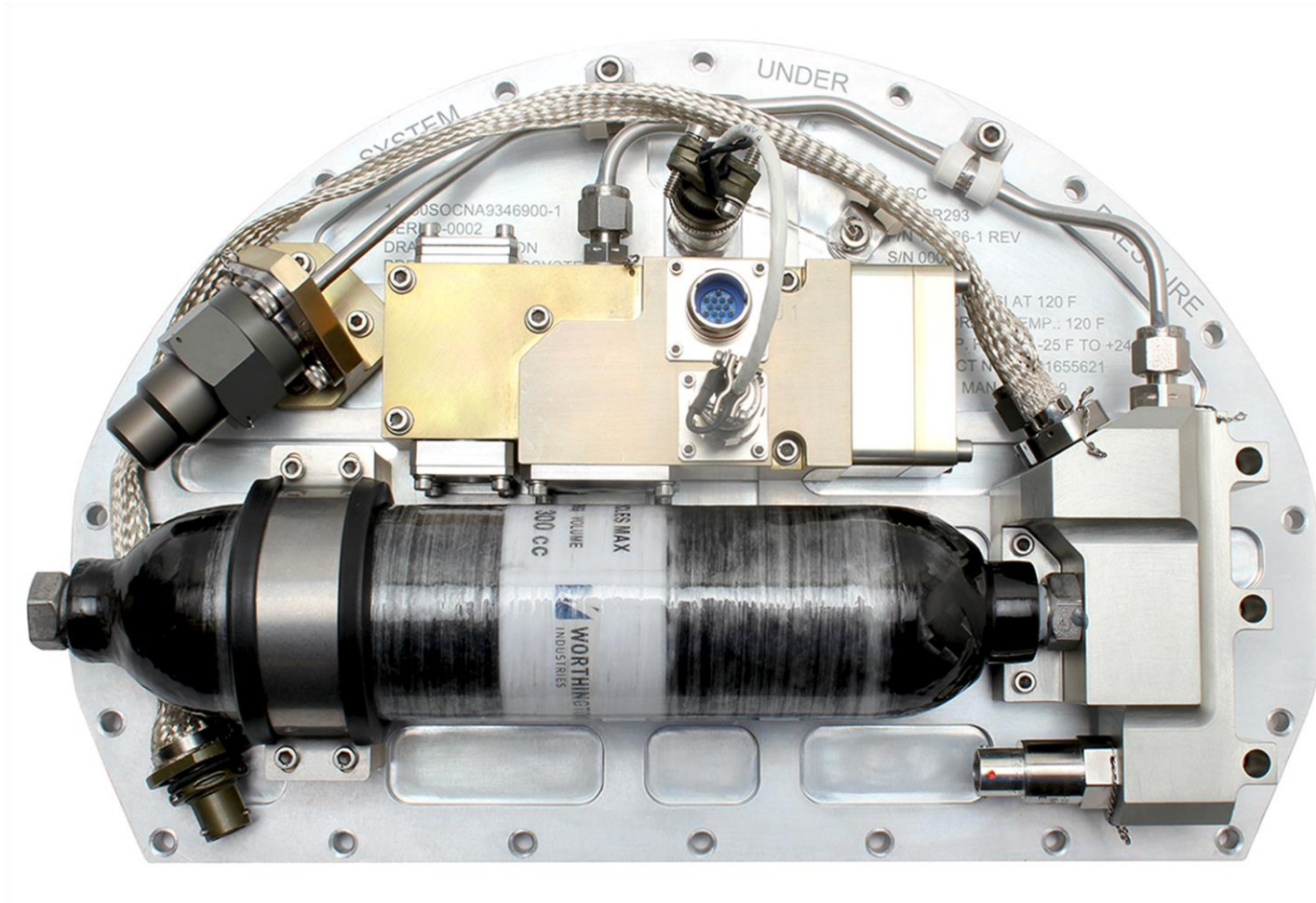
High-Temp Fuel Control Valves, Electronic Regulators

Aerospace

Proprietary to JASC—Competition Sensitive



Hypersonics



Complete Modular Propellant Pressurization Systems

Aerospace

Proprietary to JASC—Competition Sensitive



Hypersonics



Aerospace

High-Temp Pneumatic IGV Actuators & Electronics

Proprietary to JASC—Competition Sensitive



Military



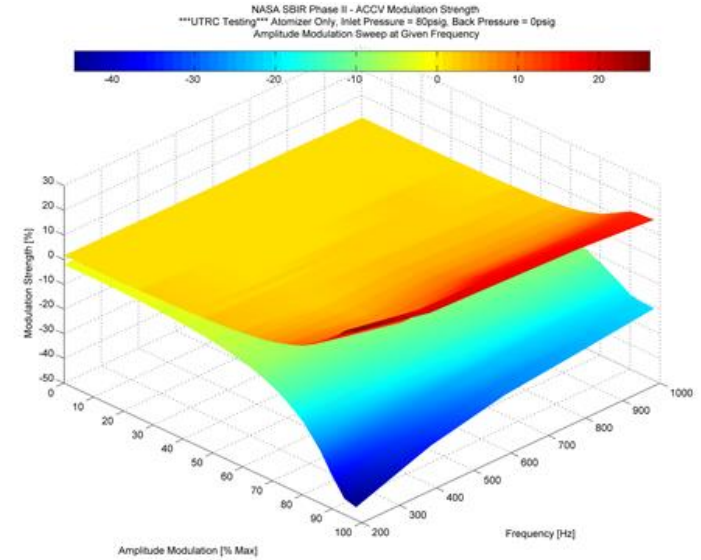
Hydraulic Shock-Arresting Valves

Aerospace

Proprietary to JASC—Competition Sensitive



Combustion Control



Adaptive Combustion Control System
Effective Suppression of Thermo-Acoustic Instabilities in
Gas Turbine Combustors and Augmenters

Aerospace

Proprietary to JASC—Competition Sensitive





Onward and Upward



www.jasc-controls.com

Bill Heatley
BD, Flight Systems
(562) 708-0222