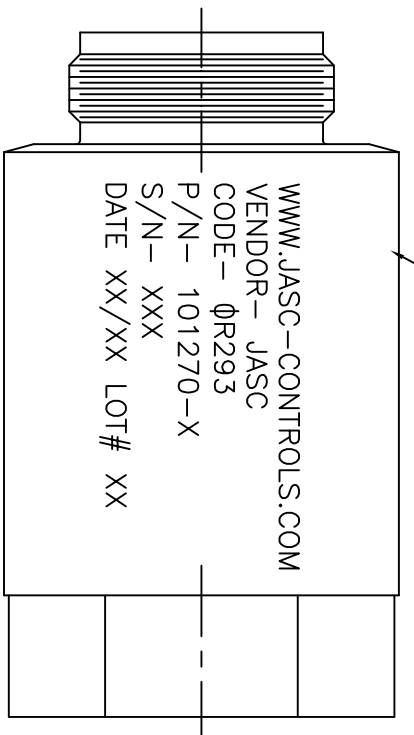
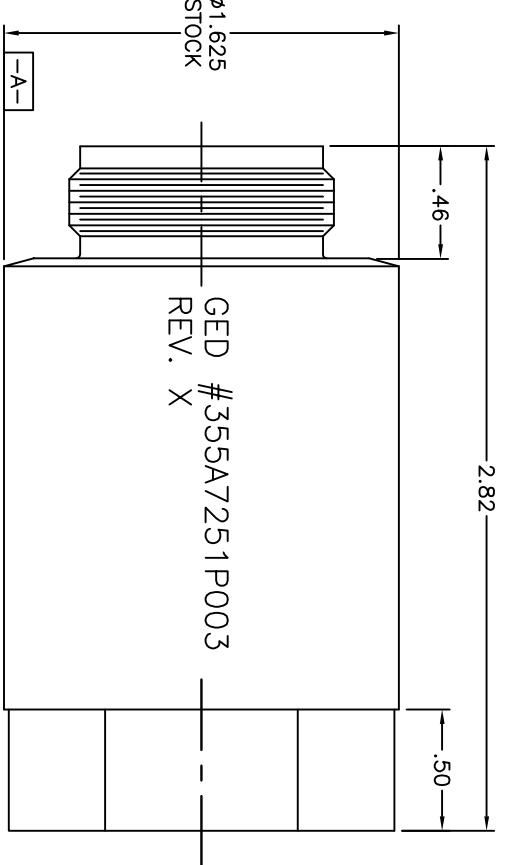


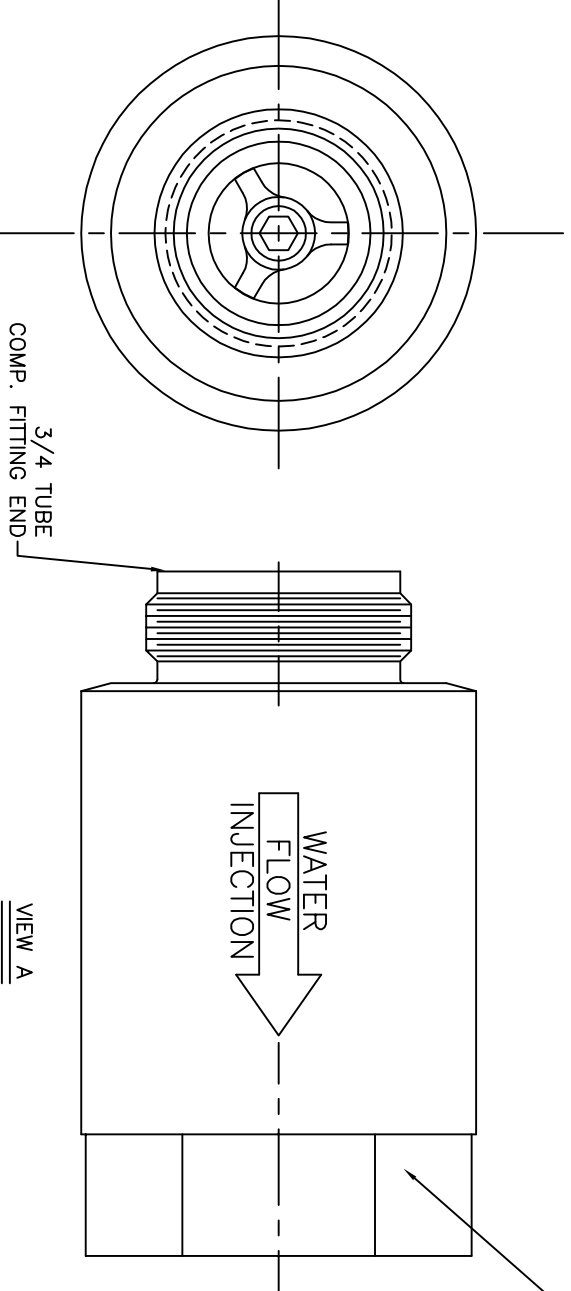
REVISIONS			
REV	DATE	DESCRIPTION	BY
A	11/01/01	SEE ECN 1695	NVD
B	3/5/04	SEE ECN 2249	NVD
C	6/5/08	SEE ECN 3131	NVD



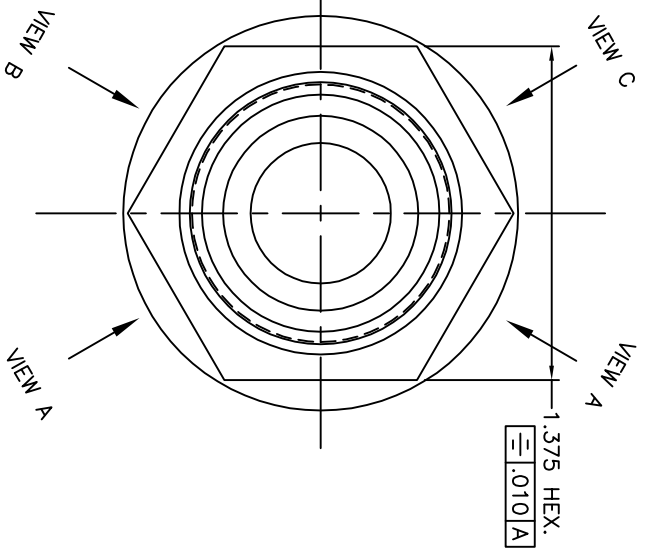
VIEW B



VIEW C



VIEW A



VIEW B

VIEW A

QTY	ITEM	PART NUMBER	DESCRIPTION	MATERIAL AND SPECIFICATION	HEAT TREAT	FINISH & SPEC.
1	2	101270-2	WATER INJECTION CHECK VLV.			
-	1	101270-1	WATER INJECTION CHECK VLV.			

THIS PRINT IS THE PROPERTY OF JASC AND REPRESENTS A PROPRIETARY ARTICLE TO WHICH JASC RETAINS THE EXCLUSIVE RIGHT OF USE AND/OR SALE. THIS PRINT IS DISCLOSED IN CONFIDENCE AND POSSESSION OF IT DOES NOT CONVEY PERMISSION TO MANUFACTURE THE ARTICLE OR ARTICLES SHOWN HEREIN. SUCH PERMISSION BEING GRANTED ONLY BY SPECIFIC AUTHORIZATION IN WRITING SIGNED BY AN OFFICER OF JASC.

DIMS. APPLY AFTER PLATING		UNLESS OTHERWISE SPECIFIED		TITLE:	
BREAK SHARP EDGES .005 .015	✓MACHINED SURFACES	DIMENSIONS ARE IN INCHES		WATER INJECTION CHECK VLV.	
.005-.020R MACHINED FILETS		SYMBOLS PER ANSI Y14.5		Tempé, Arizona	
TOLERANCES ARE:		FRACTIONS DECIMALS ANGLES		CONTRACT NO.	
± 1/64	.XX ±.1	±1°		DATE	
.XXX ±.005	.XXXX ±.005	.XXXX ±.0010		APPROVALS	
NEXT ASSY USED ON		APPLICATION		DRAWN	
				NVD	
				CHECKED	
				HBJ	
				DATE	
				9/14/01	
				SIZE	
				C	
				GAGE	
				ØR293	
				DWG. NO.	
				101270-OUTLINE	
				SCALE:	
				2X	
				SHEET	
				1 OF 1	

- CHECK PRESSURE: 300- PSID
- MAX. PRESSURE DROP @ 12 GPM-22.5 PSID
- CRACK PRESSURE: 10±1 PSID
- SOAK BACK TEMPERATURE: 700°F
- MAX. AMBIENT TEMPERATURE: 400°F
- FLOW RANGE: 0.5-12.0 GPM - WATER
- INLET TEMPERATURE: 35°F-110°F
- INLET PRESSURE: 0-1000 PSIG
- CHECK PRESSURE: 300- PSID

NOTES: UNLESS OTHERWISE SPECIFIED