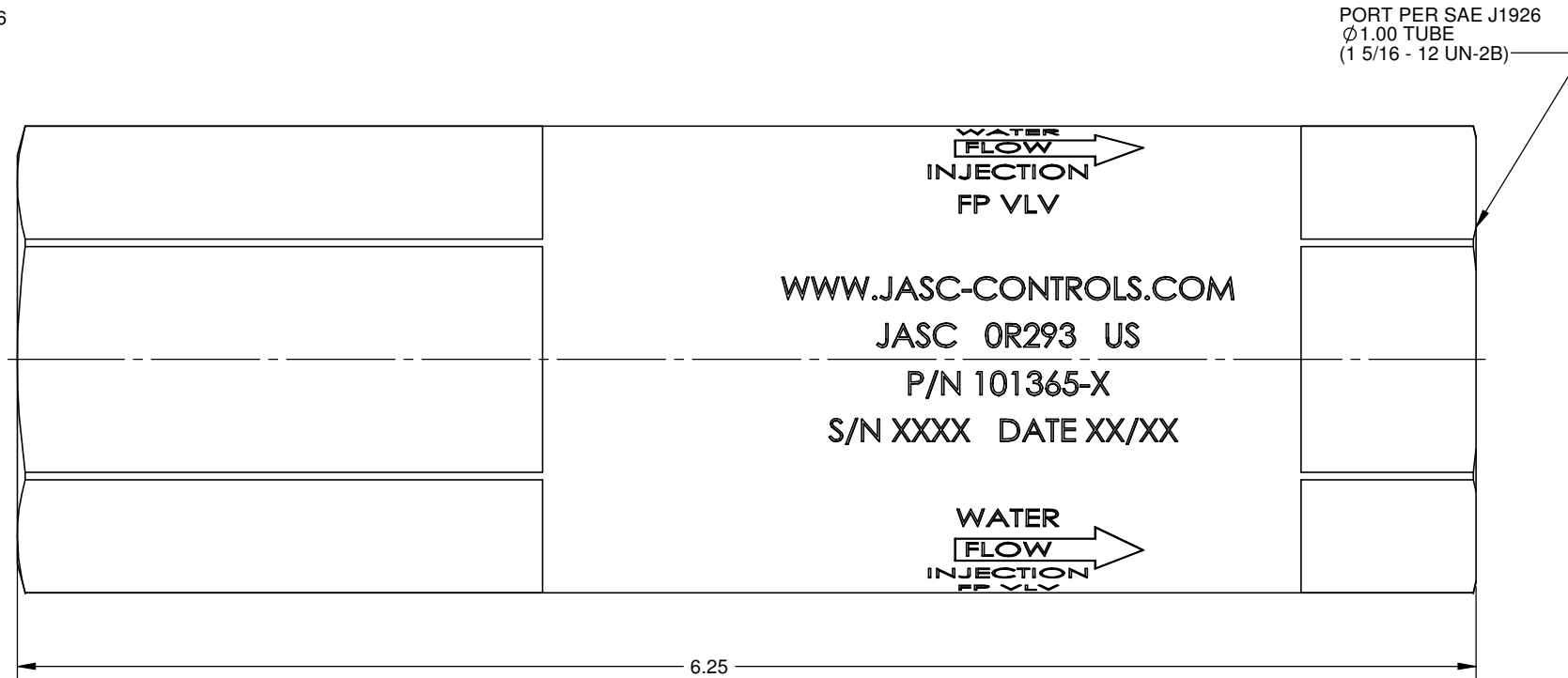
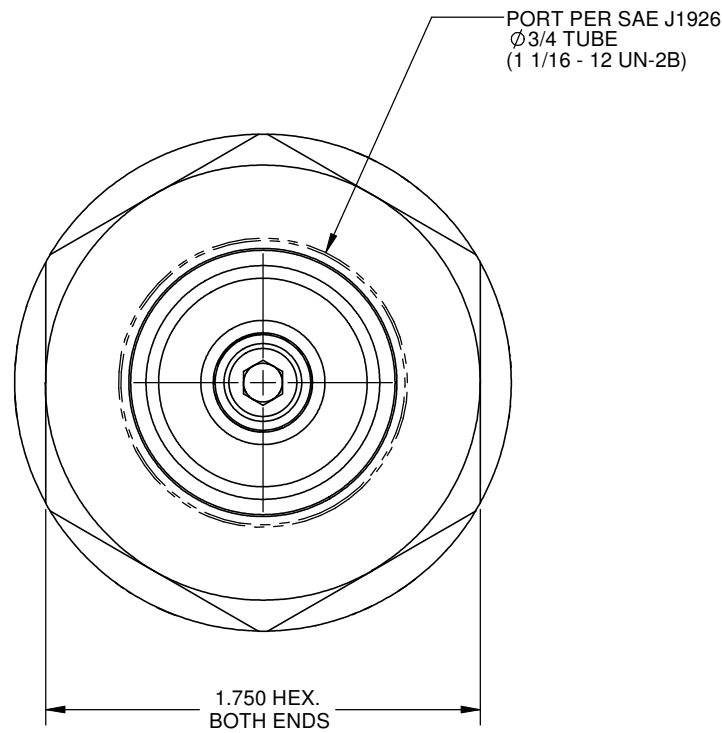
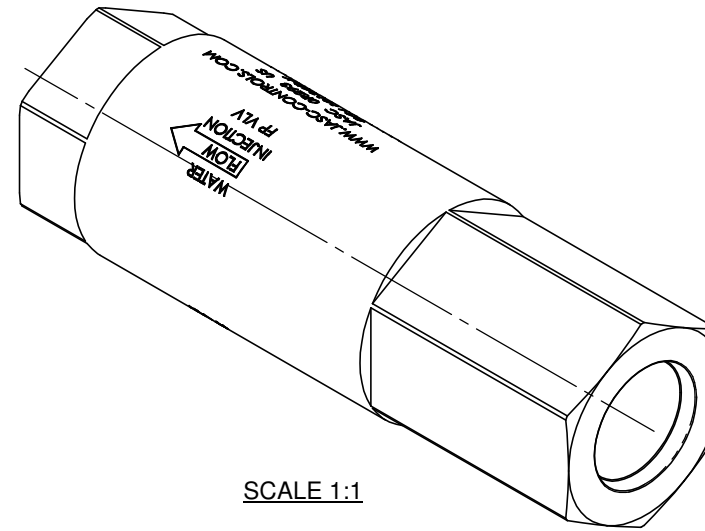


REVISIONS			
REV.	DATE	DESCRIPTION	BY
NC	4/2/2009	Initial Release	DKS




- 10. SERVICE LIFE: A MINIMUM OF 50,000 OPERATING CYCLES
- 9. LEAKAGE:  
EXTERNAL: NONE  
INTERNAL: BUBBLE TIGHT (EXCEEDS ANSI CL VI IN THE CHECK DIRECTION)
- 8. FLOW VS PRESSURE DROP: AT 16 GPM THE PRESSURE DROP SHALL BE BETWEEN 40 AND 50 PSID
- 7. FLOW RANGE: 0-22 GPM
- 6. TEMPERATURE RANGE  
AMBIENT: 35°F-450°F  
FLUID: 35°F-200°F
- 5. BACK PRESSURE RANGE: 0-350 PSIG
- 4. SUPPLY PRESSURE RANGE: 0-1400 PSIG
- 3. CRACK PRESSURE: 15 PSID NOMINAL. ADJUSTABLE FROM 10-20 PSID
- 2. OPERATING FLUID: TAP WATER OR DEMINERALIZED WATER AT VALVE INLET.  
NORMAL AIR OR COMBUSTION AIR AT VALVE DISCHARGE
- 1. THIS UNIT DESIGNED TO BE PHYSICALLY INTERCHANGEABLE WITH GE No. 354A3606P007

NOTES: UNLESS OTHERWISE SPECIFIED

THIS PRINT IS THE PROPERTY OF JASC AND REPRESENTS A PROPRIETARY ARTICLE TO WHICH JASC RETAINS THE EXCLUSIVE RIGHT OF USE AND/OR SALE. THIS PRINT IS DISCLOSED IN CONFIDENCE AND POSSESSION OF IT DOES NOT CONVEY PERMISSION TO MANUFACTURE THE ARTICLE OR ARTICLES SHOWN HEREIN; SUCH PERMISSION BEING GRANTED ONLY BY SPECIFIC AUTHORIZATION IN WRITING SIGNED BY AN OFFICER OF JASC.

DIMS. APPLY AFTER PLATING BREAK SHARP EDGES .005 .015 MACHINED SURFACES .005-.020R MACHINED FILLETS	UNLESS OTHERWISE SPECIFIED DIMENSIONS ARE IN INCHES SYMBOLS PER ANSI Y14.5 TOLERANCES ARE: FRACTIONS DECIMALS ANGLES $\pm 1/64$ .X $\pm .1$ $\pm 1^\circ$ .XX $\pm .010$ .XXX $\pm .005$ .XXXX $\pm .0010$	CONTRACT NO.	
		APPROVALS	DATE
FINAL	-	DRAWN	DKS 4/2/09
NEXT ASSY	USED ON	CHECKED	DKS 4/2/09
APPLICATION			

  
 Tempe, Arizona

**WATER INJECTION FLOW**

SIZE	CAGE	DWG. NO.
<b>C</b>	<b>ØR293</b>	101365-3 OUTLINE
SCALE: 2:1	WEIGHT: 3.953 lbs	SHT 1 OF 1

101365-3 OUTLINE NC