

8

7

6

5

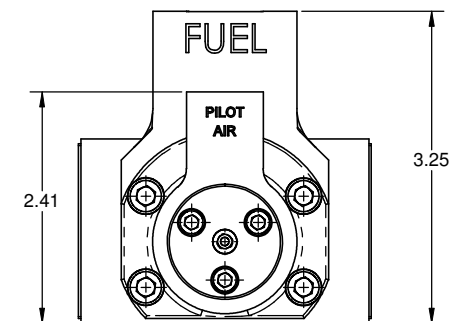
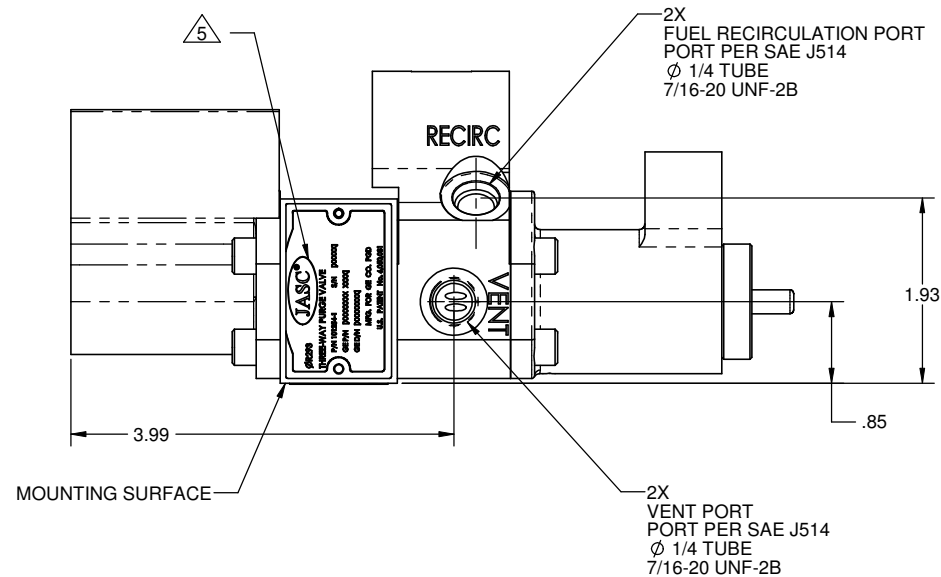
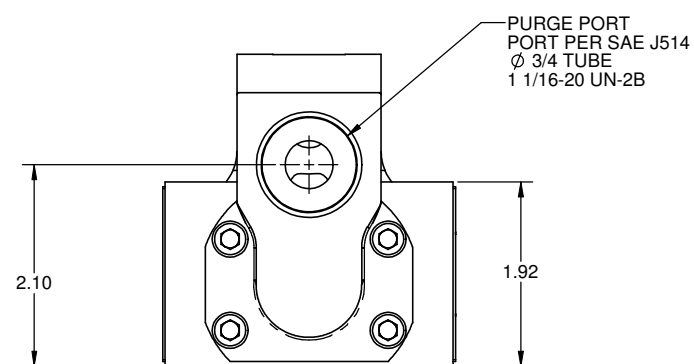
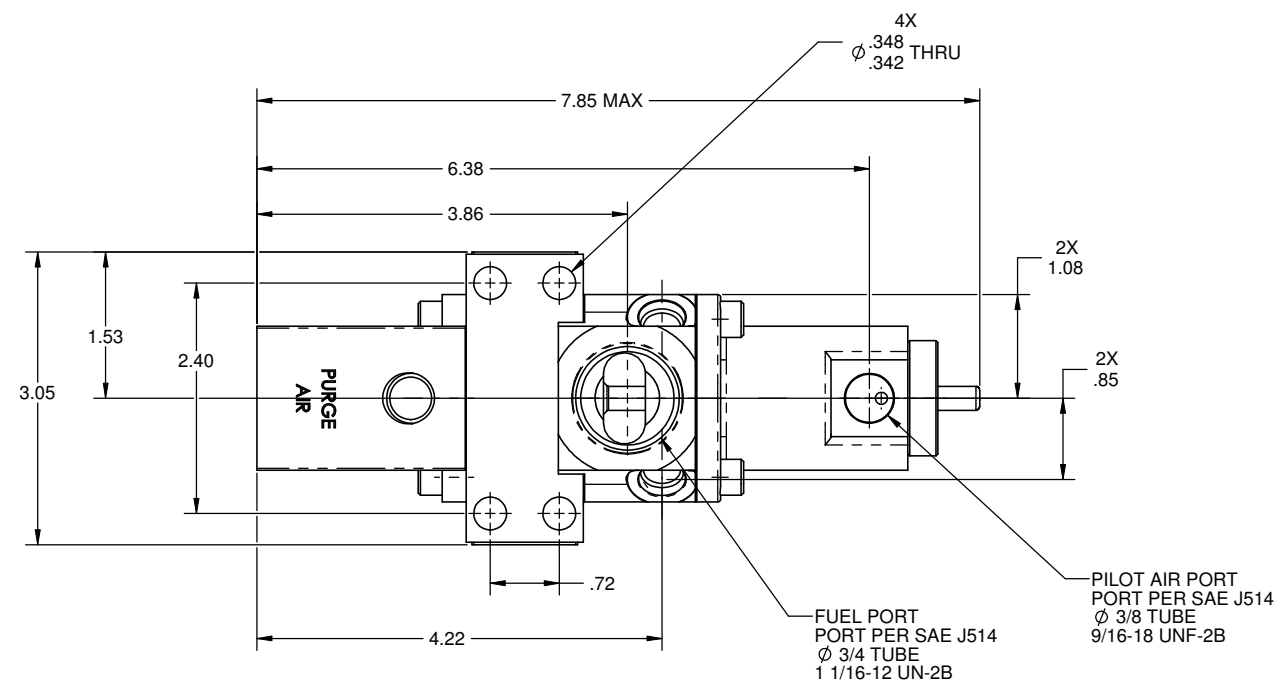
4

3

2

1

REVISIONS			
REV.	DATE	DESCRIPTION	BY
NC	8/31/2009	Initial Release	DKS



5 IDENTIFICATION NAMEPLATE USED ON ASSEMBLIES IS CONFIGURATION SPECIFIC. THE IDENTIFICATION NAMEPLATE SHOWN IN THIS ICD MAY NOT REFLECT THE PARTICULAR IDENTIFICATION NAMEPLATE USED IN ALL INSTALLATIONS.

4. PILOT AIR SPECIFICATIONS  
PRESSURE: 0-95 PSIG  
TEMPERATURE: -30°F TO +300°F

3. PURGE AIR SPECIFICATIONS  
PRESSURE: 0-300 PSIG  
TEMPERATURE: -30°F TO +400°F  
FLOW RATE: 0-0.05 LBS/SEC @ 0.5 PSID

2. FUEL SPECIFICATIONS  
FUEL TYPE: DIESEL  
PRESSURE: 0-1225 PSIG  
TEMPERATURE: 0°F TO +250°F  
FLOW RATE: 0-20 GPM @ 70 PSID MAX

1. THIS UNIT DESIGNED IN ACCORDANCE WITH G.E. POWER GENERATION ENGINEERING SPECIFICATION 366A6004

NOTES: UNLESS OTHERWISE SPECIFIED

THIS PRINT IS THE PROPERTY OF JASC AND REPRESENTS A PROPRIETARY ARTICLE TO WHICH JASC RETAINS THE EXCLUSIVE RIGHT OF USE AND OR SALE. THIS PRINT IS DISCLOSED IN CONFIDENCE AND POSSESSION OF IT DOES NOT CONVEY PERMISSION TO MANUFACTURE THE ARTICLE OR ARTICLES SHOWN HEREIN. SUCH PERMISSION BEING GRANTED ONLY BY SPECIFIC AUTHORIZATION IN WRITING SIGNED BY AN OFFICER OF JASC.		 Tempe, Arizona	
DIMS. APPLY AFTER PLATING BREAK SHARP EDGES .005 - .015 MACHINED SURFACES .005-.020R MACHINED FILLETS		CONTRACT NO. APPROVALS DATE DRAWN DKS 6/25/09 CHECKED JFC 6/25/09	
UNLESS OTHERWISE SPECIFIED DIMENSIONS ARE IN INCHES SYMBOLS PER ANSI Y14.5 TOLERANCES ARE: FRACTIONS DECIMALS ANGLES $\pm$ 1/64 .XX $\pm$ .010 $\pm$ 1° .XXX $\pm$ .005 .XXXX $\pm$ .0010		TITLE: <b>THREE-WAY PURGE VALVE</b> SIZE CAGE DWG. NO. <b>D</b> $\phi$ R293 101254-ICD SCALE: 1:1 WEIGHT: 6.164lbs SHT 1 of 1	
FINAL	USED ON	APPLICATION	

8

7

6

5

4

3

2

1

101254-ICD NC