

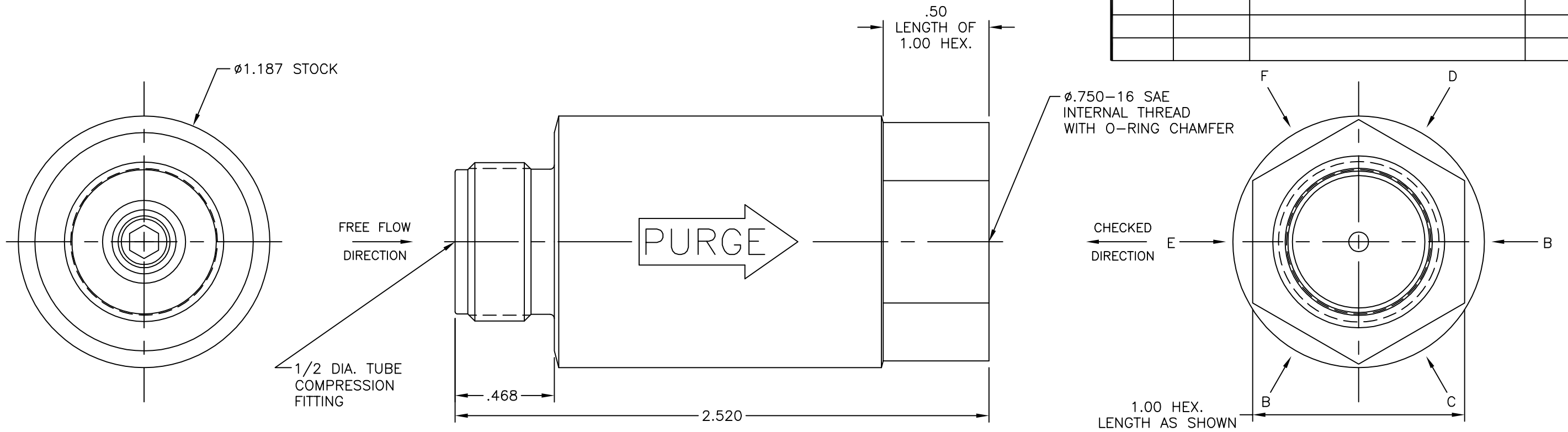
4

3

2

1

REVISIONS			
REV	DATE	DESCRIPTION	BY
NC	10/10/08	INITIAL RELEASE	NVD



B

B

101336-1 OUTLINE NC

12. CONTAMINATION LEVEL : 75 MICRONS ABSOLUTE 98.67%
39 MICRONS OR LESS 4 mg/100ml
11. LEAKAGE IN CHECK DIRECTION : 1 CC/MIN. ON AIR OR NITROGEN
10. CRACK PRESS. : 5.0 ± 1.0 PSID
9. PRESS. DROP TOLERANCE : 5.5 TO 8 PSID
8. MAXIMUM PRESS. DROP : 8 PSID
7. SOAK TEMP. : 700°F
6. MAXIMUM AMBIENT TEMP. : 400°F
5. CHECK PRESS. : 0 TO 1225 PSID
4. FLOW RANGE : 0 TO 0.125 LBS/SEC
3. INLET TEMP. : 0°F TO 300°F
2. INLET PRESS. : 0 TO 250 PSIG
1. THIS UNIT DESIGNED IN ACCORDANCE WITH
GE-PS SPECIFICATION 362A1331P006

1/2 DIA. TUBE COMPRESSION FITTING

FREE FLOW DIRECTION

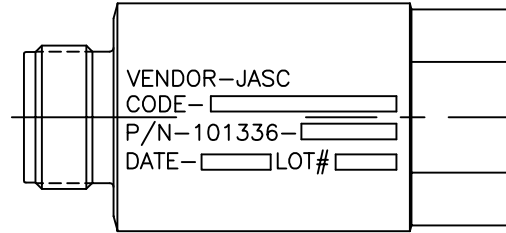
PURGE

CHECKED DIRECTION

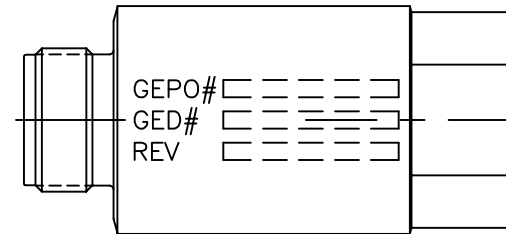
2X VIEW B

VIEW E - FULL SIZE

VIEW F - FULL SIZE



VIEW D - FULL SIZE



VIEW C - FULL SIZE

QTY REQD	ITEM NO.	PART NUMBER	DESCRIPTION	MATERIAL AND SPECIFICATION	HEAT TREAT	FINISH & SPEC.
1	1	101336-1	PURGE AIR CHECK VALVE	-	-	-

← ASS'Y NO. PARTS LIST

THIS PRINT IS THE PROPERTY OF JASC AND REPRESENTS A PROPRIETARY ARTICLE TO WHICH JASC RETAINS THE EXCLUSIVE RIGHT OF USE AND/OR SALE. THIS PRINT IS DISCLOSED IN CONFIDENCE AND POSSESSION OF IT DOES NOT CONVEY PERMISSION TO MANUFACTURE THE ARTICLE OR ARTICLES SHOWN HEREIN: SUCH PERMISSION BEING GRANTED ONLY BY SPECIFIC AUTHORIZATION IN WRITING SIGNED BY AN OFFICER OF JASC.



DIMS. APPLY AFTER PLATING BREAK SHARP EDGES .005 .015 MACHINED SURFACES .005-.020R MACHINED FILLETS		UNLESS OTHERWISE SPECIFIED DIMENSIONS ARE IN INCHES SYMBOLS PER ANSI Y14.5 TOLERANCES ARE: FRACTIONS DECIMALS ANGLES $\pm 1/64$.X $\pm .1$ $\pm 1'$.XX $\pm .010$.XXX $\pm .005$.XXXX $\pm .0010$		CONTRACT NO.		TITLE: PURGE AIR CHECK VALVE	
APPROVALS	DATE	DRAWN		DATE		SIZE	CAGE
NVD	10/10/08	JFC		10/10/08		B	$\phi R293$
NEXT ASSY	USED ON	APPLICATION		SCALE: 2X		DWG. NO. 101336-1 OUTLINE	
						SHT 1 OF 1	

4

3

2

1

A