

4

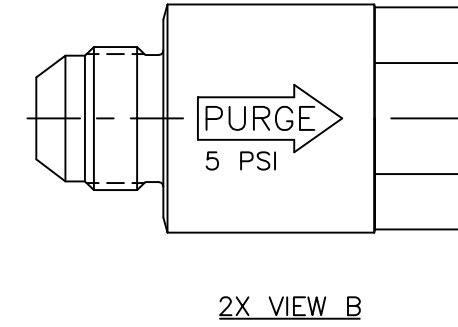
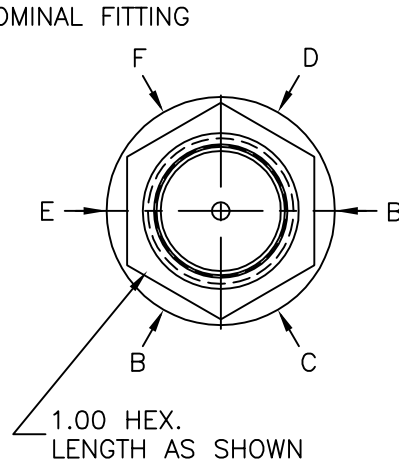
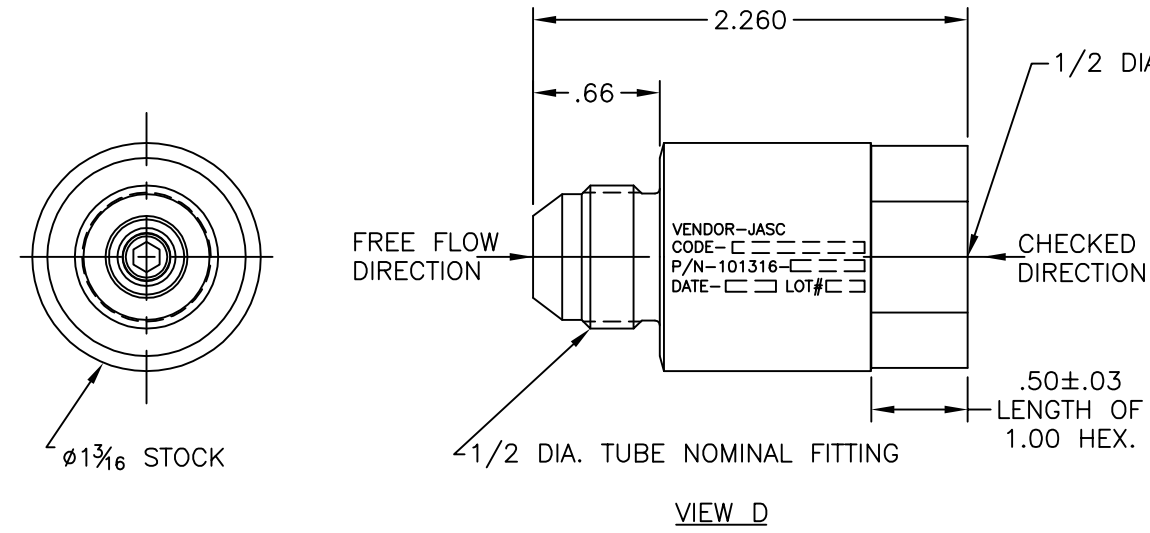
3

2

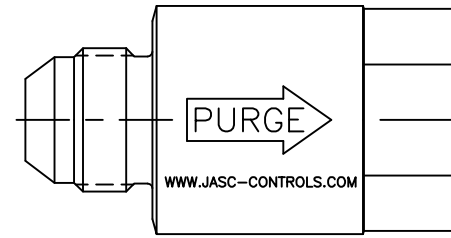
1

B

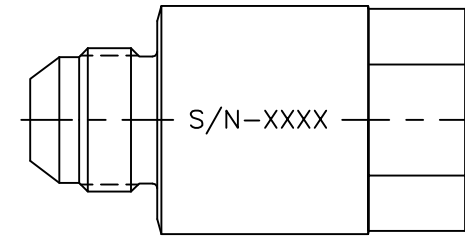
B



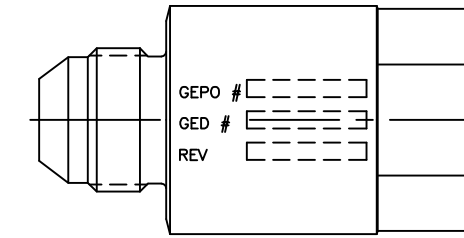
REVISIONS			
REV	DATE	DESCRIPTION	BY
NC	10/5/05	INITIAL RELEASE	NVD



VIEW F



VIEW E



VIEW C

- 12. CONTAMINATION LEVEL : 75 MICRONS ABSOLUTE 98.67%  
39 MICRONS OR LESS 4 mg/100ml
- 11. LEAKAGE IN CHECK DIRECTION : 1 CC/MIN. ON AIR OR NITROGEN
- 10. CRACK PRESS. : 5±.5 PSID
- 9. PRESS. DROP TOLERANCE : 5.5 TO 8 PSID
- 8. MAXIMUM PRESS. DROP : 8 PSID
- 7. SOAK TEMP. : 700°F
- 6. MAXIMUM AMBIENT TEMP. : 400°F
- 5. CHECK PRESS. : 0 TO 1225 PSID
- 4. FLOW RANGE : 0 TO 0.125 LBS/SEC
- 3. INLET TEMP. : 0°F TO 300°F
- 2. INLET PRESS. : 0 TO 250 PSIG
- 1. THIS UNIT DESIGNED IN ACCORDANCE WITH  
GE-PS SPECIFICATION 362A1331P005

NOTES: UNLESS OTHERWISE SPECIFIED

QTY REQD	ITEM NO.	PART NUMBER	DESCRIPTION	MATERIAL AND SPECIFICATION	HEAT TREAT	FINISH & SPEC.
1	1	101316-1	PURGE AIR CHECK VALVE	-	-	-

← ASS'Y NO. PARTS LIST

THIS PRINT IS THE PROPERTY OF JASC AND REPRESENTS A PROPRIETARY ARTICLE TO WHICH JASC RETAINS THE EXCLUSIVE RIGHT OF USE AND/OR SALE. THIS PRINT IS DISCLOSED IN CONFIDENCE AND POSSESSION OF IT DOES NOT CONVEY PERMISSION TO MANUFACTURE THE ARTICLE OR ARTICLES SHOWN HEREIN: SUCH PERMISSION BEING GRANTED ONLY BY SPECIFIC AUTHORIZATION IN WRITING SIGNED BY AN OFFICER OF JASC.



DIMS. APPLY AFTER PLATING BREAK SHARP EDGES .005 .015 MACHINED SURFACES .005-.020R MACHINED FILLETS		UNLESS OTHERWISE SPECIFIED DIMENSIONS ARE IN INCHES SYMBOLS PER ANSI Y14.5 TOLERANCES ARE: FRACTIONS DECIMALS ANGLES ± 1/64 .X ±.1 ±1' .XX ±.010 .XXX ±.005 .XXXX±.0010		CONTRACT NO.		TITLE: PURGE AIR CHECK VALVE	
FINAL		APPROVALS		DATE		SIZE	
NEXT ASSY		DRAWN NVD		10/5/05		CAGE	
USED ON		CHECKED DKS		10/5/05		DWG. NO.	
APPLICATION						101316-OUTLINE	
						SCALE: FULL	
						SHT 1 OF 1	

4

3

2

1

A

101316-OUTLINE NC