

4

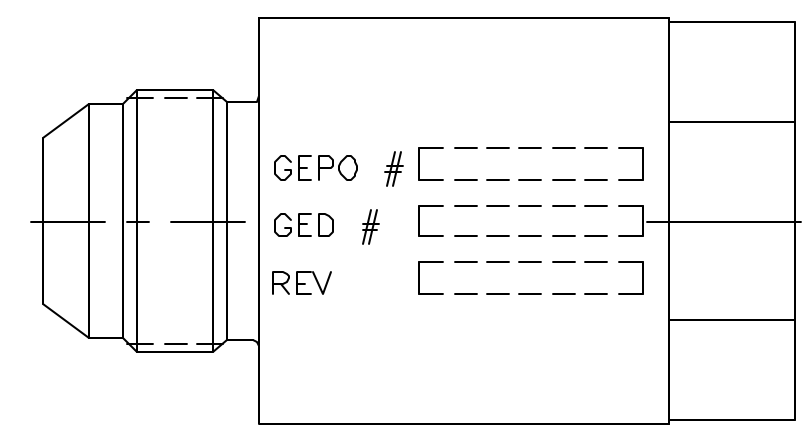
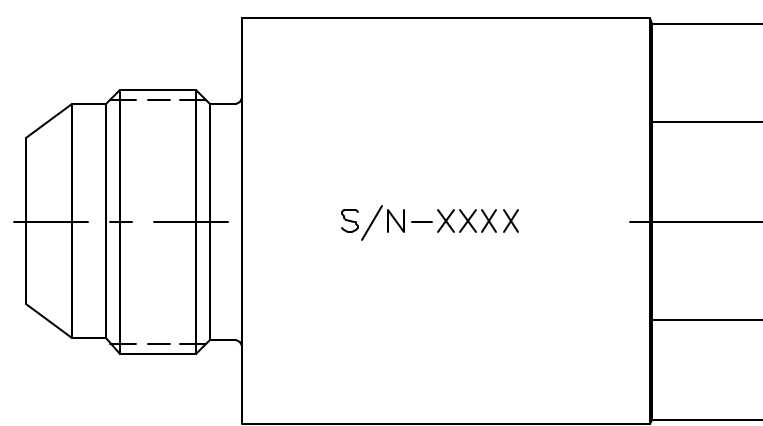
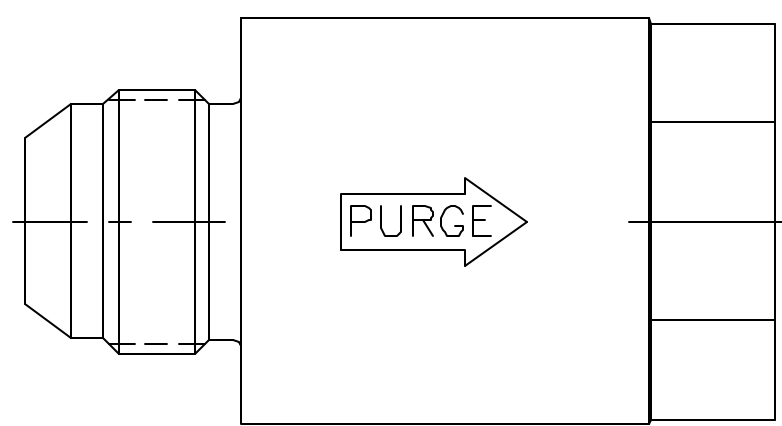
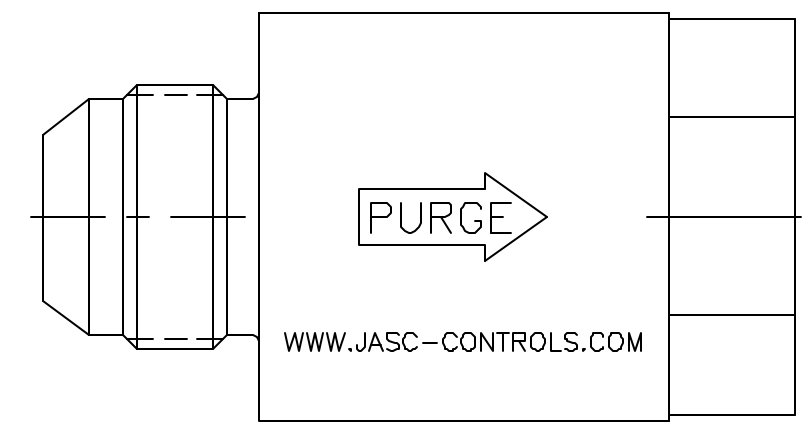
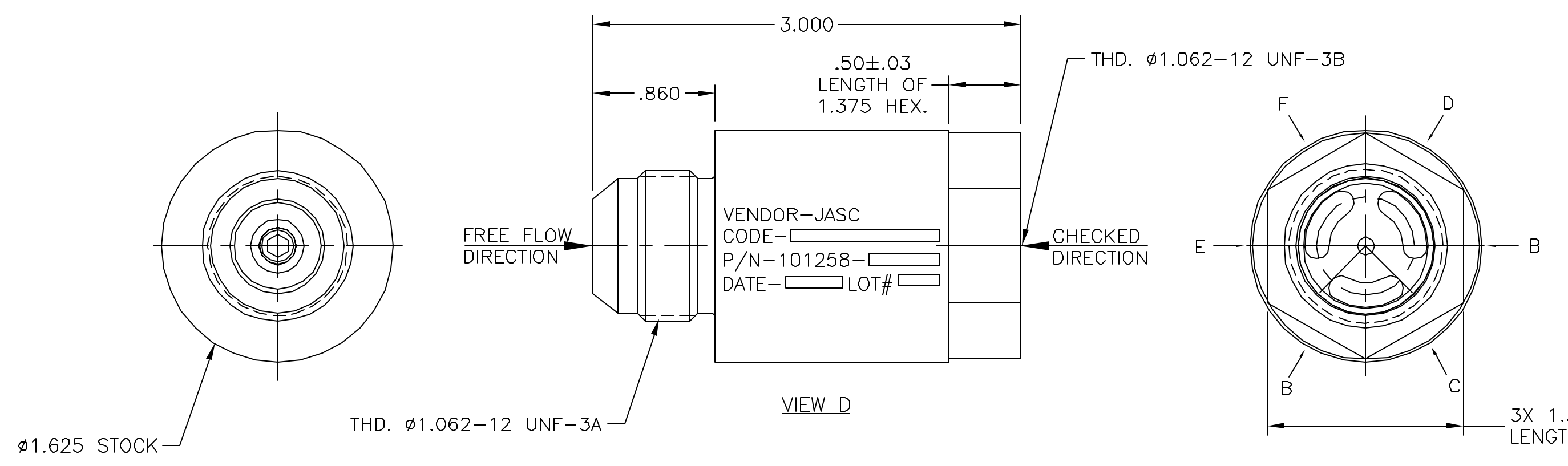
3

2

1

REVISIONS

REV	DATE	DESCRIPTION	BY
A	4/25/02	SEE ECN 1794	NVD
B	6/29/04	SEE ECN 2247	NVD



- 12. CONTAMINATION LEVEL : 75 MICRONS ABSOLUTE 98.67%
39 MICRONS OR LESS 4 mg/100ml
- 11. LEAKAGE IN CHECK DIRECTION : 1 CC/MIN.
ON AIR OR NITROGEN
- 10. CRACK PRESS. : 1 PSID MAX.
- 9. PRESS. DROP TOLERANCE : 3 TO 5 PSID
- 8. MAXIMUM PRESS. DROP : 5 PSID
- 7. SOAK TEMP. : 700°F
- 6. MAXIMUM AMBIENT TEMP. : 400°F
- 5. CHECK PRESS. : 0 TO 1225 PSID
- 4. FLOW RANGE : 0 TO 0.127 LBS/SEC
- 3. INLET TEMP. : 0°F TO 300°F
- 2. INLET PRESS. : 0 TO 250 PSIG
- 1. THIS UNIT DESIGNED IN ACCORDANCE WITH
GE-PS SPECIFICATION 362A1331P003

NOTES: UNLESS OTHERWISE SPECIFIED

QTY REQD	ITEM NO.	PART NUMBER	DESCRIPTION	MATERIAL AND SPECIFICATION	HEAT TREAT	FINISH & SPEC.
1	1	101258-1	PURGE AIR CHECK VALVE	-	-	-

← ASS'Y NO. PARTS LIST

THIS PRINT IS THE PROPERTY OF JASC AND REPRESENTS A PROPRIETARY ARTICLE TO WHICH JASC RETAINS THE EXCLUSIVE RIGHT OF USE AND/OR SALE. THIS PRINT IS DISCLOSED IN CONFIDENCE AND POSSESSION OF IT DOES NOT CONVEY PERMISSION TO MANUFACTURE THE ARTICLE OR ARTICLES SHOWN HEREIN: SUCH PERMISSION BEING GRANTED ONLY BY SPECIFIC AUTHORIZATION IN WRITING SIGNED BY AN OFFICER OF JASC.

JASC
Tempe, Arizona

DIMS. APPLY AFTER PLATING BREAK SHARP EDGES .005 .015 MACHINED SURFACES .005-.020R MACHINED FILLETS		UNLESS OTHERWISE SPECIFIED DIMENSIONS ARE IN INCHES SYMBOLS PER ANSI Y14.5 TOLERANCES ARE: FRACTIONS DECIMALS ANGLES ± 1/64 .X ±.1 ±1° .XX ±.010 .XXX ±.005 .XXXX±.0010		CONTRACT NO.		TITLE: PURGE AIR CHECK VALVE	
FINAL	USED ON	APPROVALS	DATE	SIZE	CAGE	DWG. NO.	
NEXT ASSY	APPLICATION	DRAWN NVD	10/19/01	B	ØR293	101258-OUTLINE	
		CHECKED HBJ	10/22/01	SCALE: FULL		SHT 1 OF 1	

4

3

2

1

101258-OUTLINE